

NorthPoint Health & Wellness Center Community Development Project

Community Development Project

NorthPoint Health & Wellness Center's mission is "partnering to create a healthier community" and as a community health center, social services anchor and legacy institution in North Minneapolis for 50 years, it is experiencing rapid growth. Now serving over 25,000 residents annually, the current physical space does not meet the needs of the growing patient/client base nor the needs of the community. The NorthPoint Community Board in partnership with Hennepin County has adopted this community development and campus expansion project to meet this need and align with the mission, legacy and future of NorthPoint. The project consists of:

- Expansion of the NorthPoint campus to incorporate new space for medical, dental, behavioral health, pharmacy and laboratory.
- The demolition of the NorthPoint, Inc. building and the moving of operations into new space integrated with clinical space.
- The relocation of Thor Companies' headquarters and the construction of a 627 space parking deck with offices and retail space on the southeast corner of Penn and Plymouth.
- The relocation and construction of a new Estes Funeral Chapel on the southwest corner of Penn and Plymouth

This plan is a comprehensive community development strategy that leverages NorthPoint's successful health, economic and social impact. The community development plan not only provides needed program space for patients and clients, but also extends its reach into the community providing major physical and economic development opportunities by working across multiple sectors including public, private, health, housing, food and transportation.

General Information

612-543-2500

Campus Expansion Questions:

NP.CommExpansion@hennepin.us

Additional Info

Visit our website at:

www.Northpointhealth.org

Like us on Facebook.com

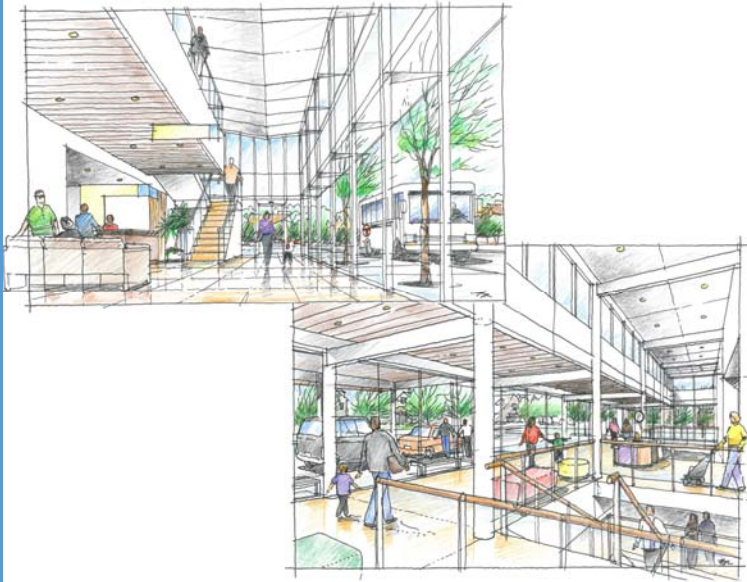
[Facebook/northpointhealth.org](https://www.facebook.com/northpointhealth.org)

Also follow us on Twitter.com

[#northpointMPLS](https://twitter.com/northpointMPLS)



NorthPoint Campus Expansion



When completed the NorthPoint Community Development Project will:

- Leverage a capital investment of \$67.6 million dollars
- Increase access to quality and innovative health and wellness services
- Expand the NorthPoint campus an additional 75,000 square feet for clinics and programs
- Create employment and economic development opportunities
- Create community spaces for active living with connections to neighborhood parks and playgrounds
- Become a national model for public-private partnerships in community-wellbeing and development

Thor Companies Headquarters Relocation



When completed the Thor development will:

- Create 76,500 square feet for office space
- Create 16,000 square feet retail space
- Create a parking deck with 627 spaces
- Create 8,600 square feet of green roof top terrace
- Includes new Copeland Art Gallery featuring local artists
- Add 150 new construction jobs

Estes New Funeral Chapel



When completed the Estes development will:

- Create a new state of the art funeral chapel
- Create chapel design meeting neighborhood historical guidelines
- Create more space and gardens for families
- Increase parking